



Square Cut Shears

For neat, square cuts here are the 8 features that make Vale Shears the standard for the industry:

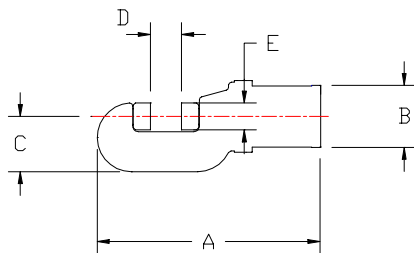
1. Mill-type BOLTED CAP CONSTRUCTION for easy maintenance.
2. SUPER SEALING, with only TEFLON parts touching the cylinder bore.
3. BRONZE-FILLED TEFLON WEAR RING prevents piston from touching cylinder bore.
4. ALL STEEL SUSPENSION RING for maximum safety.
5. AXIAL RAM GUIDE KEY for more accurate blade cuts.
6. SINGLE SPRING CONSTRUCTION for longer life.
7. HIGH STRENGTH BRONZE RAM BUSHING.
8. ALLOY STEEL HEAT-TREATED and HARD PLATED single piece ram and piston for simplicity and accuracy. Requires one less



Normal "Pinch" Cut



Square Cut



Vale gives you even more:

- TWIST LOCK electrical connector with BOOT PROTECTOR.
- HEAVY DUTY trigger type switch, 15 AMP rated.
- HIGH STRENGTH ALUMINUM switch handle with integral trigger guard for greater safety.
- Heavy-walled cylinder, 4,500 PSI working pressure with 4 to 1 SAFETY FACTOR.
- HIGH STRENGTH ALLOY heat treated "C" frame.
- FOUR SHEARING EDGES on each blade for maximum life.

MODEL	CAPACITY DIA. In"	SHEAR STRENGTH PSI @	BLADE #	WEIGHT LB.	DIM A In"	DIM B In"	DIM C In"	DIM D In"	DIM E In"
V15SC-D1685	0.81	60,000	A-3013	45.0	11.12	3.93	3.06	0.88	1.12
V35SC-D1580	1.25	55,000	A-1750	74.0	15.5	6.5	5.0	1.38	1.62
V70SC-D1652	1.62	60,000	A-2731	235.0	20.88	7.75	5.88	1.94	2.0

NOTE: See Bulletin 170 for cycle times. All information subject to change without notice.

Corporate Headquarters

Vale Industries Inc.
122 Simonds Ave.,
DeKalb, Illinois 60115-3992
Phone: (815) 756-2426
Fax: (815) 756-2735
E-mail: info@vale-industries.com
www.vale-industries.com

International Division

Vale Industries Inc.
115 S. 4th Avenue.
St. Charles, Illinois 60174-2145
Phone: (630) 584-1900
Fax: (630) 584-2599